



## Canadian Occupational Performance Measure (COPM®): integration into the Acute Care Stroke Pathway



When rehab has been identified as the discharge disposition, initiate the COPM® before the patient leaves

For patients with cognitive or communication impairments determine if the patient is able to participate. If they are unable...



initiate the COPM® with a caregiver/family member who knows the patient well



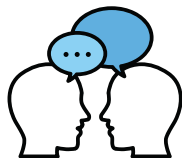
document the reason for being unable to complete the COPM® (e.g. translation services unavailable)

### STEPS TO COMPLETE THE COPM®



#### Print

Print the COPM® from the references page of E-Stroke\*



#### Discuss

Discuss with the patient their current Occupational Performance Problem (OPP)



#### Ask

Ask them to rate their OPPs importance on a scale of 1-10



#### Ask

Ask the patient to identify their top 5 OPPs



#### Provide

Provide a completed copy of the COPM® to the patient



#### Complete

Complete local documentation requirements



#### Input

Input COPM® results on E-Stroke

\*The E-Stroke copy of the COPM® has been approved by COPM® authors and can be included as part of the patient record.