



Canadian Occupational Performance Measure (COPM®): integration into the Outpatient Rehabilitation Stroke Pathway

Complete the COPM® with **all** patients or caregivers



COPM® is completed as part of the **initial** and **discharge** assessment process.

For patients with cognitive or communication impairments determine if the patient is able to participate in the discussion.
 If they are unable...



Complete the COPM® with a caregiver/family member who knows the patient well

document the reason for being unable to complete the COPM® (e.g. translation services unavailable), <7days LOS)

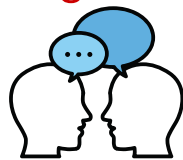
STEPS TO COMPLETE THE COPM®

for patients coming from inpatient rehab or no initiated COPM®



Initiate & Print

Initiate a new COPM®
 Print the COPM® from the references page of E-Stroke*



Discuss

Discuss with the patient their current Occupational Performance Problem (OPPs) and ask them to rate the importance on a scale of 1 - 10.



Ask

Ask the patient to identify their top 5 OPPs



Complete

Complete T1 performance and satisfaction score for each OPP as part of the admission assessment



Provide

Provide a completed copy of the COPM® to the patient



Complete

Complete local documentation requirements



Input

Input COPM® results on E-Stroke



Complete

Complete T2 performance and satisfaction scores prior to discharge**

*The E-Stroke copy of the COPM® has been approved by COPM® authors and can be included as part of the patient record.
 **Ensure the COPM® is completed by the same person (caregiver or patient) for the pre and post.